



8

Where should I go for advice if I have concerns about my child?



Consultations about your child's development, behavior and/or household situation

Child Guidance Office

This specialized consultation center supports families and think of solutions together with you so that your child can develop physically and mentally in a healthy way and demonstrate his/her abilities to the fullest.



For advice about your child's school life, friendships, truancy, etc.

Tokyo Metropolitan Education Consultation Center

This consultation center handles issues involving children from preschool age to high school age such as bullying, friendships, school life, truancy, concerns and anxieties about childrearing, family relationships, developmental disorders, self-injury, domestic violence, corporal punishment, problems arising from being young carers, enrollment or transfers to Tokyo metropolitan high schools, and life after dropping out of high school.



For advice about support for children with medical needs and their families

Tokyo Metropolitan Medical Care Children Support Center

This consultation center works in partnership with relevant organizations to provide comprehensive support for children who require daily medical care—such as respiratory management using ventilators and suctioning of phlegm—and their families to ensure that they receive appropriate support in line with the child's physical and mental condition.



For advice about enrolling in or transferring to a Tokyo Metropolitan School for Special Needs Education, employment after graduation, etc.

Tokyo Metropolitan Special Needs Education Promotion Office

This is a consultation service for those seeking to enroll in or transfer to a Tokyo Metropolitan School for Special Needs Education (kindergarten, elementary school, junior high school, and high school).



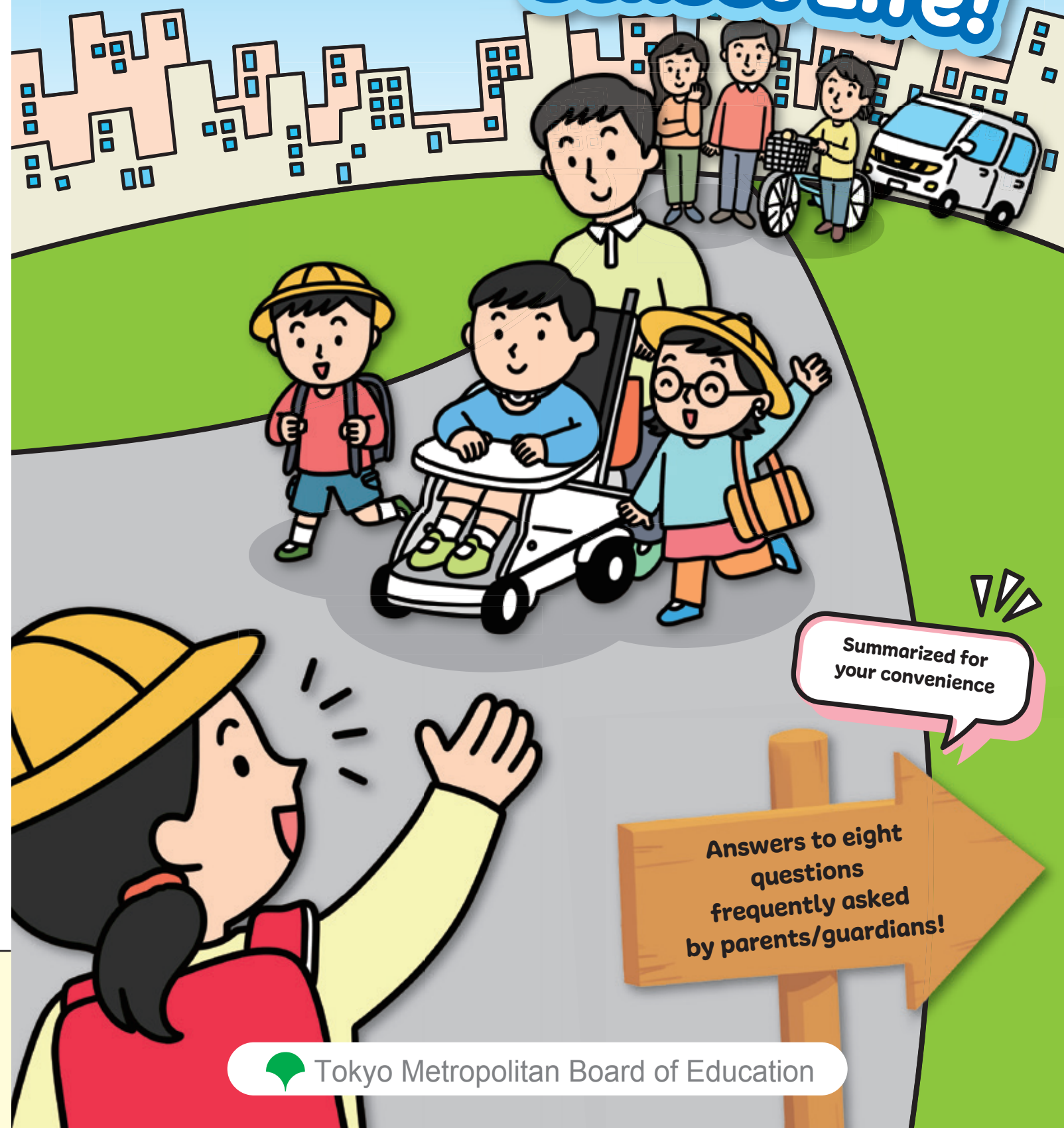
Inquiries: Tokyo Metropolitan Special Needs Education Promotion Office
Tel: 03-5228-3433 Email: soudan@shugaku.metro.tokyo.jp

とうきょう すいしんしつ

Search

To all parents/guardians
**School Placement
Consultation** Guidebook

Support for Your Child's School Life!



Summarized for
your convenience

Answers to eight
questions
frequently asked
by parents/guardians!



Tokyo Metropolitan Board of Education



1

I have concerns about my child's behavior at home and/or nursery school, and I don't know if they are ready to attend school.

Not interested in letters and numbers



Difficulty socializing



Seems to have vision problems when reading books/watching TV



Clumsy when walking
Falls down a lot



Does not react when called loudly by name



Angers easily
Has no patience



At a school placement consultation session

Feel free to ask about anything related to your child's school placement.

You can consult about anything, including your child's behavior and development. We will help you find a place of learning that best fits your child.

During the consultation, we ask you about your child's age, development and behavior at home and at nursery school, etc. Please provide detailed answers.

Once we have interviewed you, a consultant with specialized experience will give you advice.

Please contact the Board of Education of your municipality (School Placement Consultation Desk).



Video (closed captioning available)
To All Parent/Guardians Seeking a School Placement Consultation (audio in Japanese only)



2

Are there places of learning that fit my child?

The following places of learning are available in Tokyo.

① Special Needs Schools



These are schools for children with moderate to severe disabilities. They provide thorough support for children who have difficulties in their studies and daily lives, and conduct education aimed at helping students become independent. For children with severe disabilities or illnesses who have difficulty commuting to school, special needs teachers visit their homes or hospitals to provide them with learning opportunities.

② Elementary school and junior high school



•Special needs classes

These are classes for children with mild disabilities. Students are taught in small groups, with the content tailored to the learning needs of each child.

•Regular classes in combination with special needs classes

Although it is possible for a child with special needs to receive some special needs education while enrolled in regular classes, in general the support will be limited since regular classes are conducted based on the premise of group lessons.

Children with special needs enrolled in regular classes who can generally participate in lessons can also receive special instruction once or twice a week in a different classroom. (Depending on the type of his/her disability, the child will be placed in a special support class or special needs class at regular school.)

Your child's current situation and educational needs will be monitored, and they will receive instruction tailored to their individual needs regardless of the school they enroll in.



Video (closed captioning available)
Visit to a Special Needs Class (audio in Japanese only)



Video (closed captioning available)
Visit to a Special Needs School (audio in Japanese only)

Visual impairment ▶



Hearing impairment ▶



Physical disability ▶



Intellectual disability ▶





3

How can school placement consultations help me? What should I bring to the consultations, and what type of mindset should I have?



4

Please describe the whole enrollment procedure.



Interview with parents/guardians



Video (closed captioning available)
Discussion about School Placement Consultation
Part 1 (audio in Japanese only)



April to June	May to December	October to March	April
---------------	-----------------	------------------	-------

Board of Education of your municipality

Tokyo Metropolitan Board of Education

Parents/guardians of new first-year elementary or junior high school students apply to the board of education of their municipality via phone, etc.

School placement consultation

- Interview with the parent/guardian
- Developmental test
- Activities in small groups
- Observation of your child's behavior at nursery school/school
- School tour, experience lessons, etc.



School Placement Support Committee

Notification of results and confirmation of parents/guardians' intentions

Tokyo Metropolitan School Placement Consultation

Notification of enrollment dates, etc.

Orientation for prospective students

Special Needs School

Regular classes, special needs classes

The schedule and consultation procedure differ depending on the municipal board of education involved, the starting date of consultations, and other factors.

We will work with you to find a school that provides an education that meets the educational needs of your child through interviews with specialized counselors, developmental testing by psychologists, and observation of your child's behavior.



Interview with consultants



Video (closed captioning available)
Interview about School Placement Consultation (audio in Japanese only)



Based on the interview and other discussions, your municipality's board of education will contact you regarding the school your child will be placed in. If that school is a special needs school, you need to undergo additional school placement consultations with the Tokyo Metropolitan Government. If the school does not meet the wishes of the child or the parent/guardian, another interview may be conducted.

Progressing one step at a time together!



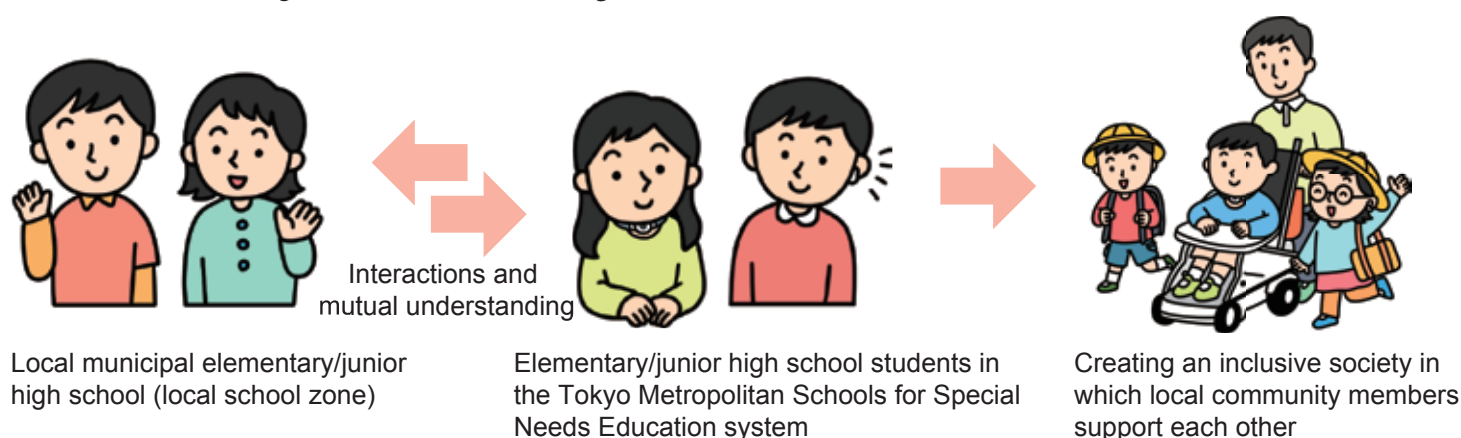


5

What is secondary enrollment? What kinds of interactions with the community will my child have?

The secondary enrollment system allows elementary and junior high school students enrolled in the Tokyo Metropolitan Schools for Special Needs Education system to maintain secondary enrollment in a municipal elementary or junior high school within their local administrative area. The students will maintain and continue their connection with the area they live in through direct and indirect interactions.

Secondary Enrollment System = “Heart-to-heart” education



Direct interactions

Students at Tokyo Metropolitan Schools for Special Needs Education participate in classes and school events at local schools, chaperoned by parent/guardians, etc.

Participation in school events

- School plays • School festivals
- Exhibitions • Field days

Participation in school life

- Lessons • School lunches • School clubs



Indirect interactions

Student interactions will be conducted through activities such as exchanging self-introduction cards and school newsletters and exhibiting artwork at exhibitions.



Interview with parents/guardians

Video (closed captioning available)
Discussion about School Placement Consultation
Part 2 (audio in Japanese only)



6

What medical care is available after enrollment?

Regardless of the place of learning selected, we will discuss the necessary medical care for school life during the school placement consultation and consider various measures.

Since schools do not have a doctor onsite, in principle, nurses will provide medical care under the written direction of a doctor. To ensure that nurses can provide medical care safely in school, we may consult with you about the specifics of the care your child needs and the techniques used.

Teachers who have completed training in specific procedures such as sputum suction, as well as school nursing staff, also provide medical care at Special Needs School for Physically Disabled.



Website
Tokyo Metropolitan Board of Education
Medical Care at Tokyo Metropolitan Schools



7

What if I believe that the school my child was placed in is not a good fit?

If necessary, you can discuss changing (transferring) your child's place of learning depending on his/her growth and adaptation to the school, the school environment, etc.

If your child's condition or other circumstances change, please consult with his/her homeroom teacher first.

In principle, transferring schools without changing addresses is only allowed at the start of a new school year.

